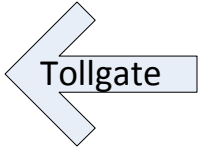
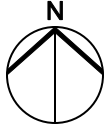


Grande Ronde Hospital Elgin Health Clinic

Questions? Call 541-437-2273



Division St



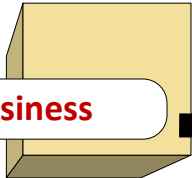
Dental Clinic
1400 Division St

Phillips Creek

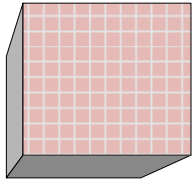
Wallowa Highway 82

Elgin Health Clinic
570 S 8th

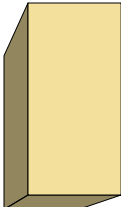
2/16/2016 Open for business



**Future new Elgin Health
District building, coming
Spring 2017**



WC Construction



**Stampede
Grounds**

